



Watching Video

Concrete Pumps / Boom Pumps

ECP21ZX

Boom Type

4 section Z folding

Vertical Reach

21m

Horizontal Reach

16.8m

Depth Reach

11.8m

Delivery Pipe Diameter

100mm

Slewing Range

360°

Outrigger

Diagonal extension (Front)

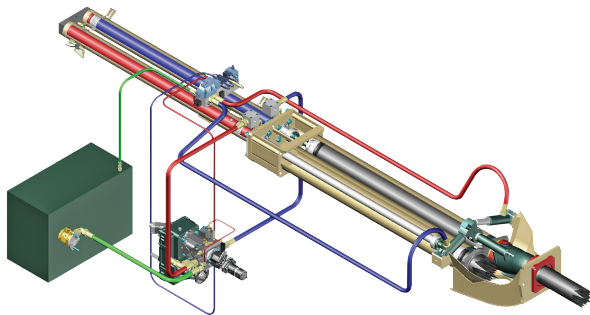
Fixed jack cylinder (Rear)



EVERDIGM

FFH SYSTEM (Free Flow Hydraulic)

This type of FFH Hydraulic Pressurized Systems combined with **Rexroth**[®] pumps and **Hawe**[®] boom control block is widely recognized to all over the world due to efficiency and stability. Currently Everdigm Pumps are applying these systems for longtime and widely known and also proven the products to everyone. Based on these facts FFH systems are used all over the world and mostly welcomed. Efficient pumps, less boom bouncing and less noise for while it operates. As above all, these reasons they are providing comfortable working area.



FEATURES

PUMPING UNIT

Closed-loop Free Flow Hydraulic System
 Inductive Proximity Switch and Indicator
 Single Lip Concrete Piston
 Hard-Chromed Concrete Cylinder

BOOM & STRUCTURE

4 Stage Z-Folding Boom
 Diagonal Extension Front Outrigger (One Stage)
 Jack Cylinder Rear Outrigger (Fixed)
 Outrigger Pilot Check Valves
 Hyd. Motor and Gear Type Boom Slewing
 High Pressure End Hose (2.5m)
 Boom & Deck Pipe Diameter 100mm
 Greasing Port on Boom Link and Pedestal
 Bubble Gauge on Both Side
 Hinged Type Side Plates on Platform
 Water Pump, Water Tank, Cleaning Hose and Spray Nozzle
 Working Light on Pedestal and Platform

HOPPER

Easy Clean Type Hopper
 Hi-Manganese Agitating Paddle
 400 Liter Volume Hopper
 Hopper Outlet Diameter 125mm
 S2012 Type S-tube (Dia.200-125mm)
 ZX connection type elbow (Dia.125mm) on hopper outlet
 Reducing Pipe (Dia.125-100mm)
 Tungsten Carbide Wear Ring and Plate
 Single Agitator Motor
 Auto Lubrication
 Working Light on Hopper

Direct connecting main pump and hydraulic cylinders
 improve pumping efficiency

Less peak pressure & less boom bouncing by peak
 pressure control

No need of big oil tank

Cut down maintenance cost

Applying suction filter

Prevent contamination in main pump

Centralized pumping controller

Easy access and maintenance

CONTROL KIT

Wire Remote Control (40m Cord)
 Wireless Remote Control (Proportional)
 Remote ON/OFF Pumping
 Remote ON/FF Engine
 Infinite Variable RPM Control
 Boom Control Block
 Outrigger Control Block on Both Side
 Emergency Stop Switch
 Electric Main Control Panel and Local Controller
 Pneumatic Solenoid Valve Type PTO Control
 Stroke Changeover Switch

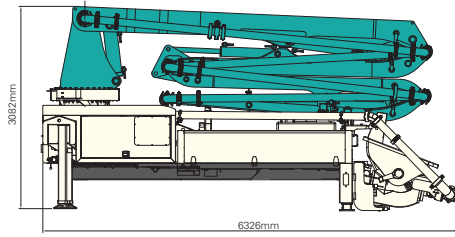
OPTIONAL

Boom	Auto Lubrication
	One Side Support (OSS) System
	Working Light
Outrigger	Outrigger Pads and Compartment
	Cover
Hopper	Safety Device
	Central Manual Lubrication
	Vibrator
Platform	Handrail on Rear Step
	Spare Tire Storage Bracket
Paint	Customized Color

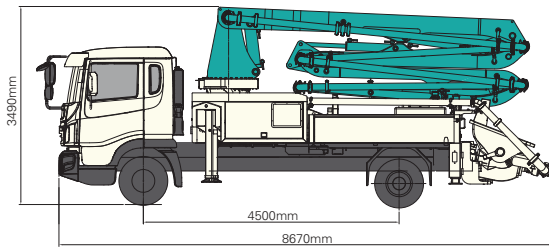
Note) For more optional item not mentioned above please consult the manufacture.

SPECIFICATIONS

DIMENSIONS



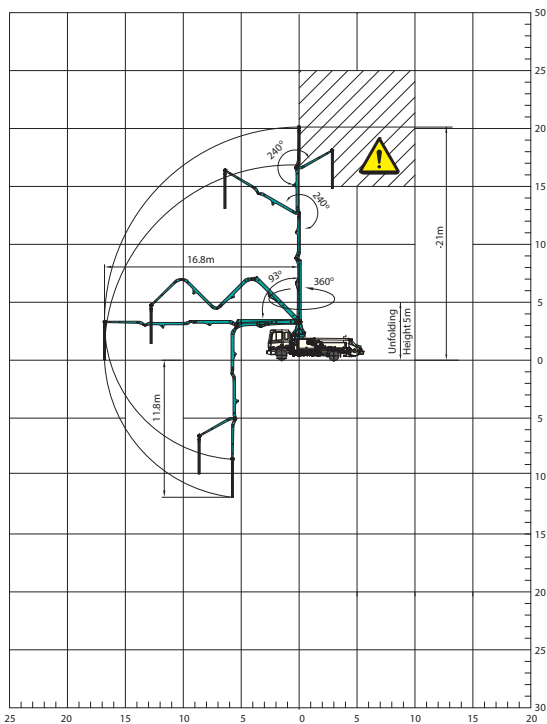
Pump Unit Weight	8,110kg
Water Tank Capacity	400L



Front Axle Loading Weight	5,000kg
Rear Axle Loading Weight	13,100kg

* Weight and dimension figures here are subject to change on various chassis option and additional axle application etc.

WORKING RANGE



⚠ Don't use in caution area

UNIT : m

PUMP

Pump Cell	1208
Control System	Closed Free Flow Hydraulic
Main Pump	A4VG125
Concrete Cylinder (mm)	Dia.200
	Stroke 1,200
Drive Cylinder (mm)	Dia.110
	Stroke 1,200
Theoretical Concrete Output (m ³ /h)	81 (rod) / 54 (piston)
Theoretical Concrete Pressure (bar)	71 (rod) / 106 (piston)
Stroke No. (per minute)	36 (rod) / 24 (piston)
Transfer Tube Type	S-Tube, S2012 (Dia. 200-125mm)
Hopper Volume (liter)	400

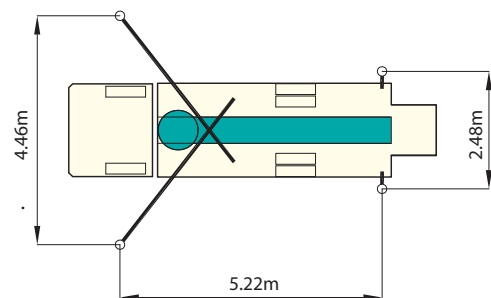
BOOM

Folding Type	4 Stage Z-folding
Slewing Angle	360
Max. Vertical Reach	21m
Max. Horizontal Reach	16.8m
Max. Depth Reach	11.8m (incl. End Hose 2.5m)
Unfolding Height	5m
End Hose Length	2.5m
Delivery Pipe Dia.	100mm

OUTRIGGER

Front Outrigger	One Stage Diagonal Extension
	Full Spread Width 4.46m
Rear Outrigger Type	Fixed Jack Cylinder
	Full Spread Width 2.48m

OUTRIGGER SPREAD



Note) Technical amendments are reserved. The specifications are subject to change with or without prior notice.

EVERDIGM

EVERDIGM is large sized company with \$250M turnover providing customers across the world with its quality products. EVERDIGM has been working and growing based on the platform of advanced quality, professionalism and real satisfaction. Standing behind the customers taking responsibility at all stage its product life cycle is EVERDIGM's commitment.



Build the Future

The spirit, "build the future", enables EVERDIGM to make a remarkable growth over 80 countries now. EVERDIGM offers the best value concrete pump which is key to build the brighter future for dealers and customers.

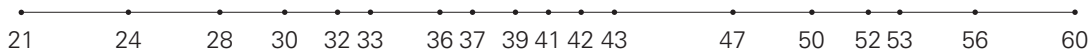
Concrete Pump

- Free Flow Hydraulic System
- Boom Pump Ranging from 21M to 60M
- Placing Boom of Various Design
- High Pressure Trailer and Line Pump



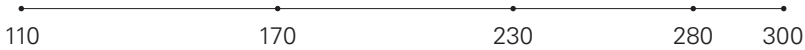
Truck Mounted Boom Pump Line-up (Max. Vertical Reach)

Unit : m



Trailer Pump Line-up (Max. Concrete Pressure)

Unit : bar



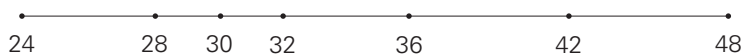
Line Pump Line-up (Max. Concrete Pressure)

Unit : bar



Placing Boom Line-up (Max. Horizontal Reach)

Unit : m



Distributed by

Head Office & Factory
 332-3, Janggwan-Ri, Jincheon-Eub, Chungcheongbuk-Do, Korea
 Tel_+82-43-530-3300 Fax_+82-43-530-3429

Sales & Marketing Office
 Room #1203, Woolim Lion's Valley 2, 680, Gasan-Dong, Geumcheon-Gu, Seoul, Korea
 Tel_+82-2-801-0800 Fax_+82-2-801-0899

@EVERDIGM Corp. Printed in Korea

