



Watching Video

Concrete Pumps / Boom Pumps

ECP30CX-5

Boom Type

5 section ZR folding

Vertical Reach

30m

Horizontal Reach

25.8m

Depth Reach

19.7m

Delivery Pipe Diameter

100mm

Slewing Range

370°

Outrigger

Diagonal extension (Front)

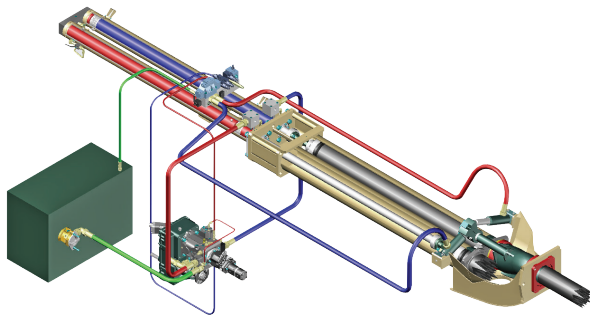
Telescopic (Rear)



EVERDIGM

FFH SYSTEM (Free Flow Hydraulic)

This type of FFH Hydraulic Pressurized Systems combined with **Rexroth**[®] pumps and **Hawe**[®] boom control block is widely recognized to all over the world due to efficiency and stability. Currently Everdigm Pumps are applying these systems for longtime and widely known and also proven the products to everyone. Based on these facts FFH systems are used all over the world and mostly welcomed. Efficient pumps, less boom bouncing and less noise for while it operates. As above all, these reasons they are providing comfortable working area.



Direct connecting main pump and hydraulic cylinders improve pumping efficiency

Less peak pressure & less boom bouncing by peak pressure control

No need of big oil tank

Cut down maintenance cost

Applying suction filter

Prevent contamination in main pump

Centralized pumping controller

Easy access and maintenance

FEATURES

PUMPING UNIT

Closed-loop Free Flow Hydraulic System

Inductive Proximity Switch and Indicator

Single Lip Concrete Piston

Hard-Chromed Concrete Cylinder

BOOM & STRUCTURE

5 Stage ZR-Folding Boom

Diagonal Extension Front Outrigger (One Stage)

Telescopic Rear Outrigger (One Stage)

Outrigger Pilot Check Valves

Rack Gear Cylinder Type Boom Slewing

High Pressure End Hose (2.5m)

Boom & Deck Pipe Diameter 100mm

Greasing Port on Boom Link and Pedestal

Bubble Gauge on Both Side

Hinged Type Side Plates on Platform

Water Pump, Water Tank, Cleaning Hose and Spray Nozzle

Working Light on Pedestal and Platform

HOPPER

Easy Clean Type Hopper

Hi-Manganese Agitating Paddle

400 Liter Volume Hopper

Hopper Outlet Diameter 125mm

S2012 Type S-tube (Dia.200-125mm)

Flap elbow (Dia.125mm) on hopper outlet

Reducing Pipe (Dia.125-100mm)

Tungsten Carbide Wear Ring and Plate

Single Agitator Motor

Auto Lubrication

Working Light on Hopper

CONTROL KIT

Wire Remote Control (40m Cord)

Wireless Remote Control (Proportional)

Remote ON/OFF Pumping

Remote ON/FF Engine

Infinite Variable RPM Control

Boom Control Block

Outrigger Control Block on Both Side

Emergency Stop Switch

Electric Main Control Panel and Local Controller

Pneumatic Solenoid Valve Type PTO Control

Stroke Changeover Switch

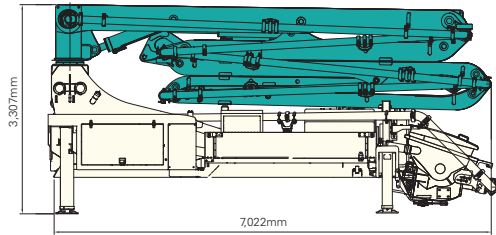
OPTIONAL

Boom	Auto Lubrication
	Working Light
Outrigger	Outrigger Pads and Compartment
	Cover
Hopper	Safety Device
	Central Manual Lubrication
	Vibrator
Platform	Handrail on Rear Step
	Spare Tire Storage Bracket
Paint	Customized Color

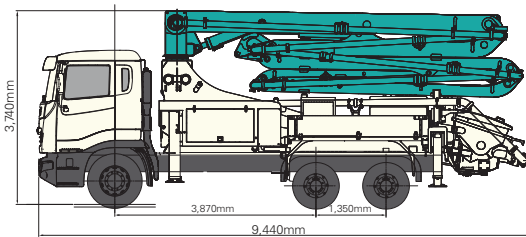
Note) For more optional item not mentioned above please consult the manufacture.

SPECIFICATIONS

DIMENSIONS



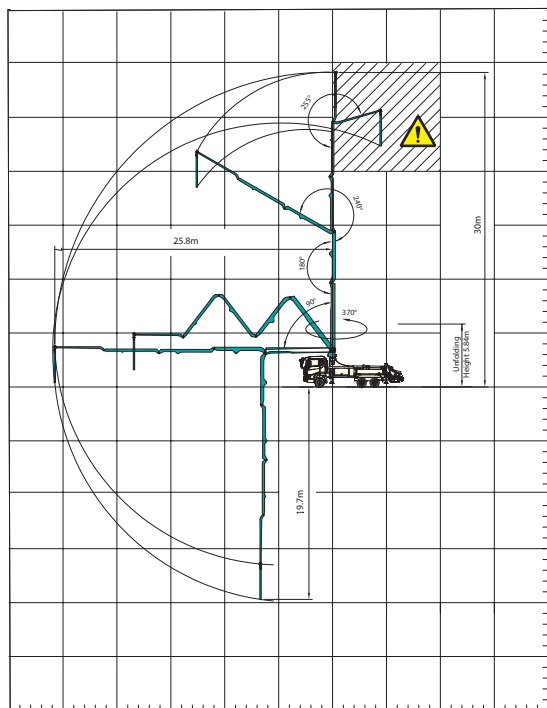
Pump unit Weight	12,500kg
Water Tank Capacity	400liter



Front Axle Loading Weight	6,300kg
Rear Axles Loading Weight	13,800kg

* Weight and dimension figures here are subject to change on various chassis option and additional axle application etc.

WORKING RANGE



⚠ Don't use in caution area

UNIT : m

PUMP

Pump Cell	1609
Control System	Closed Free Flow Hydraulic
Main Pump	A4VG125
Concrete Cylinder (mm)	Dia.200 Stroke 1,600
Drive Cylinder (mm)	Dia.110 Stroke 1,600
Theoretical Concrete Output (m ³ /h)	70
Theoretical Concrete Pressure (bar)	90
Stroke No. (per minute)	25
Transfer Tube Type	S-Tube, S2012 (Dia. 200-125mm)
Hopper Volume (liter)	400

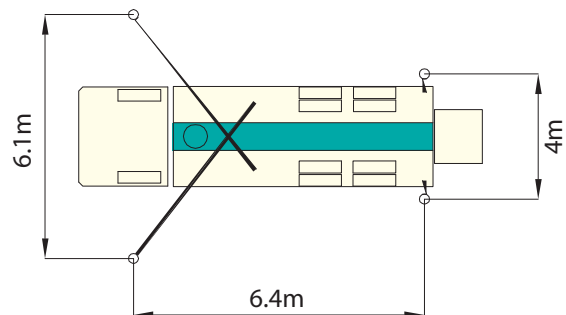
BOOM

Folding Type	5 Stage ZR-folding
Slewing Angle	370
Max. Vertical Reach	30m
Max. Horizontal Reach	25.8m
Max. Depth Reach	19.7m (incl. End Hose 2.5m)
Unfolding Height	5.84m
End Hose Length	2.5m
Delivery Pipe Dia.	100mm

OUTRIGGER

Front Outrigger	One Stage Diagonal Extension Full Spread Width 6.1m
Rear Outrigger Type	One Stage Telescopic Full Spread Width 4m

OUTRIGGER SPREAD



Note) Technical amendments are reserved. The specifications are subject to change with or without prior notice.

EVERDIGM

EVERDIGM is large sized company with \$250M turnover providing customers across the world with its quality products. EVERDIGM has been working and growing based on the platform of advanced quality, professionalism and real satisfaction. Standing behind the customers taking responsibility at all stage its product life cycle is EVERDIGM's commitment.



Build the Future

The spirit, "build the future", enables EVERDIGM to make a remarkable growth over 80 countries now. EVERDIGM offers the best value concrete pump which is key to build the brighter future for dealers and customers.

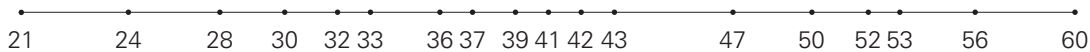
Concrete Pump

- Free Flow Hydraulic System
- Boom Pump Ranging from 21M to 60M
- Placing Boom of Various Design
- High Pressure Trailer and Line Pump



Truck Mounted Boom Pump Line-up (Max. Vertical Reach)

Unit : m



Trailer Pump Line-up (Max. Concrete Pressure)

Unit : bar



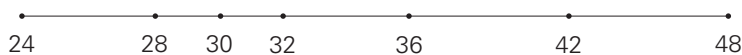
Line Pump Line-up (Max. Concrete Pressure)

Unit : bar



Placing Boom Line-up (Max. Horizontal Reach)

Unit : m



Distributed by

Head Office & Factory
332-3, Janggwan-Ri, Jincheon-Eub, Chungcheongbuk-Do, Korea
Tel_+82-43-530-3300 Fax_+82-43-530-3429

Sales & Marketing Office
Room #1203, Woolim Lion's Valley 2, 680, Gasan-Dong, Geumcheon-Gu, Seoul, Korea
Tel_+82-2-801-0800 Fax_+82-2-801-0899

@EVERDIGM Corp. Printed in Korea

