



Watching Video

Concrete Pump / Boom Pump

ECP36ZX

Boom Type

4 section Z folding

Vertical Reach

36m

Horizontal Reach

31.5m

Depth Reach

23.4m

Delivery Pipe Diameter

125mm

Slewing Range

370°

Outrigger

Diagonal extension (Front)

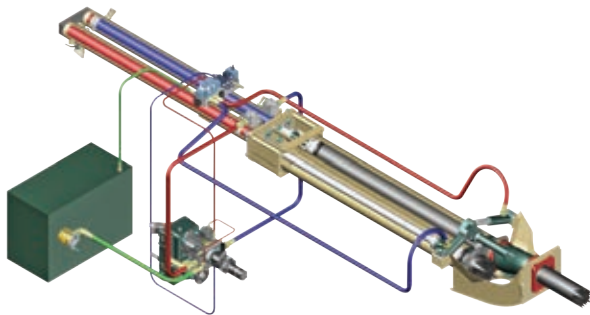
Swing-type (Rear)



EVERDIGM

FFH SYSTEM (Free Flow Hydraulic)

This type of FFH Hydraulic Pressurized Systems combined with **Rexroth**[®] pumps and **Hawe**[®] boom control block is widely recognized to all over the world due to efficiency and stability. Currently Everdigm Pumps are applying these systems for longtime and widely known and also proven the products to everyone. Based on these facts FFH systems are used all over the world and mostly welcomed. Efficient pumps, less boom bouncing and less noise for while it operates. As above all, these reasons they are providing comfortable working area.



FEATURES

PUMPING UNIT

- _____ Closed-loop Free Flow Hydraulic System
- _____ Inductive Proximity Switch and Indicator
- _____ Single Lip Concrete Piston
- _____ Hard-Chromed Concrete Cylinder

BOOM & STRUCTURE

- _____ 4 Stage Z-Folding Boom
- _____ Diagonal Extension Front Outrigger (One Stage)
- _____ Swing Rear Outrigger (One Stage)
- _____ Outrigger Pilot Check Valves
- _____ Rack Gear Cylinder Type Boom Slewing
- _____ High Pressure End Hose (3m)
- _____ Boom & Deck Pipe Diameter 125mm
- _____ Greasing Port on Boom Link and Pedestal
- _____ Bubble Gauge on Both Side
- _____ Water Pump, Water Tank, Cleaning Hose and Spray Nozzle
- _____ Working Light on Pedestal and Platform

HOPPER

- _____ Easy Clean Type Hopper
- _____ Hi-Manganese Agitating Paddle
- _____ 600 Liter Volume Hopper
- _____ Hopper Outlet Diameter 180mm
- _____ S2018 Type S-tube (Dia.200-180mm)
- _____ Flap Elbow (Dia.180-150mm) with Cleaning Port
- _____ Reducing Pipe (150-125mm)
- _____ Tungsten Carbide Wear Ring and Plate
- _____ Hydraulic Agitator Motors on Both Side Hopper
- _____ Working Light on Hopper

- _____ Direct connecting main pump and hydraulic cylinders improve pumping efficiency
- _____ Less peak pressure & less boom bouncing by peak pressure control
- _____ No need of big oil tank
- _____ Cut down maintenance cost
- _____ Applying suction filter
- _____ Prevent contamination in main pump
- _____ Centralized pumping controller
- _____ Easy access and maintenance

CONTROL KIT

- _____ Wire Remote Control (40m Cord)
- _____ Wireless Remote Control (Proportional)
- _____ Remote ON/OFF Pumping
- _____ Remote ON/FF Engine
- _____ Infinite Variable RPM Control
- _____ Boom Control Block
- _____ Outrigger Control Block on Both Side
- _____ Emergency Stop Switch
- _____ Electric Main Control Panel and Local Controller
- _____ Pneumatic Solenoid Valve Type PTO Control
- _____ Stroke Changeover Switch

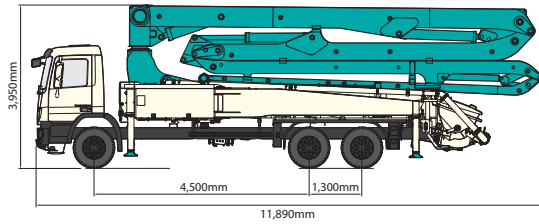
OPTIONAL

- | | |
|-----------|---|
| | Twin Wall Pipe |
| Boom | Auto Lubrication |
| | Working Light |
| Outrigger | Outrigger Pads and Compartment |
| | Cover |
| Hopper | Safety Device |
| | Vibrator |
| | Aluminum Platform |
| | Water Tank Heater |
| Platform | Handrail on Rear Step |
| | Pipe Storage Bracket on One Side Rear Outrigger |
| | Spare Tire Storage Bracket on Platform |
| Paint | Customized Color |

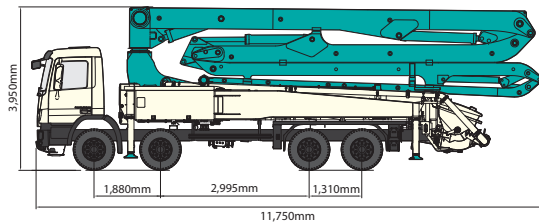
Note) For more optional item not mentioned above please consult the manufacture.

SPECIFICATIONS

DIMENSIONS



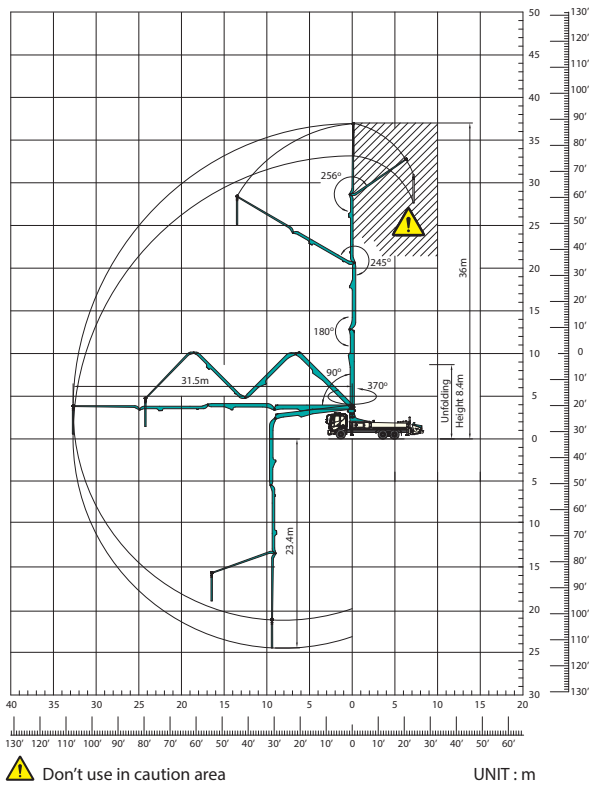
| | |
|---------------------------|----------|
| Front Axle Loading Weight | 6,500kg |
| Rear Axles Loading Weight | 19,300kg |



| | |
|---------------------------|----------|
| Front Axle Loading Weight | 10,300kg |
| Rear Axles Loading Weight | 16,400kg |

* Weight and dimension figures here are subject to change on various chassis option and additional axle application etc.

WORKING RANGE



PUMP

| Pump Cell | 2113 | 2114 | 2116 |
|---|--------------------------------|---------|-----------|
| Control System | Closed Free Flow Hydraulic | | |
| Main Pump | A4VG125 | A4VG180 | A4VG125x2 |
| Concrete Cylinder (mm) | Dia. 230 | 230 | 230 |
| | Stroke 2,100 | 2,100 | 2,100 |
| Drive Cylinder (mm) | Dia. 120 | 130 | 140 |
| | Stroke 2,100 | 2,100 | 2,100 |
| Theoretical Concrete Output (m ³ /h) | 130 | 140 | 160 |
| Theoretical Concrete Pressure (bar) | 54 | 70 | 85 |
| Stroke No.(perminute) | 24 | 26 | 30 |
| Transfer Tube Type | S-Tube, S2018 (Dia. 200-180mm) | | |
| Volume of Hopper (liter) | 600 | 600 | 600 |

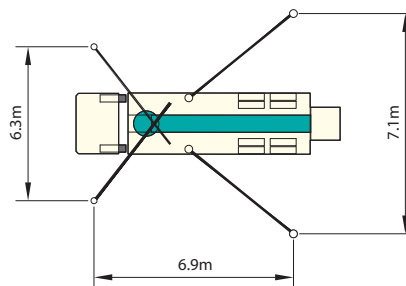
BOOM

| | |
|-----------------------|---------------------------|
| Folding Type | 4 Stage Z-folding |
| Slewing Angle | 370deg. |
| Max. Vertical Reach | 36m |
| Max. Horizontal Reach | 31.5m |
| Max. Depth Reach | 23.4m (incl. End Hose 3m) |
| Unfolding Height | 8.4m |
| End Hose Length | 3m |
| Delivery Pipe Dia. | 125mm |

OUTRIGGER

| | |
|---------------------|--|
| Front Outrigger | One Stage Diagonal Extension Full Spread Width 6.3m |
| Rear Outrigger Type | One Stage Swing-out Full Spread Width 7.1m |

OUTRIGGER SPREAD



Note) Technical amendments are reserved. The specifications are subject to change with or without prior notice.

EVERDIGM

EVERDIGM is large sized company with \$250M turnover providing customers across the world with its quality products. EVERDIGM has been working and growing based on the platform of advanced quality, professionalism and real satisfaction. Standing behind the customers taking responsibility at all stage its product life cycle is EVERDIGM's commitment.

Build the Future

The spirit, "build the future", enables EVERDIGM to make a remarkable growth over 80 countries now. EVERDIGM offers the best value concrete pump which is key to build the brighter future for dealers and customers.

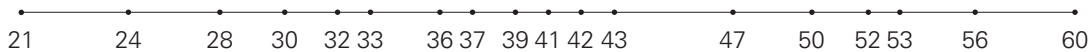
Concrete Pump

- Free Flow Hydraulic System
- Boom Pump Ranging from 21M to 60M
- Placing Boom of Various Design
- High Pressure Trailer and Line Pump



Truck Mounted Boom Pump Line-up (Max. Vertical Reach)

Unit : m



Trailer Pump Line-up (Max. Concrete Pressure)

Unit : bar



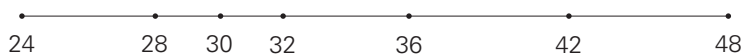
Line Pump Line-up (Max. Concrete Pressure)

Unit : bar



Placing Boom Line-up (Max. Horizontal Reach)

Unit : m



Distributed by

Head Office & Factory
332-3, Janggwan-Ri, Jincheon-Eub, Chungcheongbuk-Do, Korea
Tel_+82-43-530-3300 Fax_+82-43-530-3429

Sales & Marketing Office
Room #1203, Woolim Lion's Valley 2, 680, Gasan-Dong, Geumcheon-Gu, Seoul, Korea
Tel_+82-2-801-0800 Fax_+82-2-801-0899

@EVERDIGM Corp. Printed in Korea

