



Watching Video

Concrete Pumps / Boom Pumps

# ECP30ZX

**Boom Type**

4 section Z folding

**Vertical Reach**

30m

**Horizontal Reach**

25.8m

**Depth Reach**

18.7m

**Delivery Pipe Diameter**

125mm

**Slewing Range**

370°

**Outrigger**

Diagonal extension (Front)

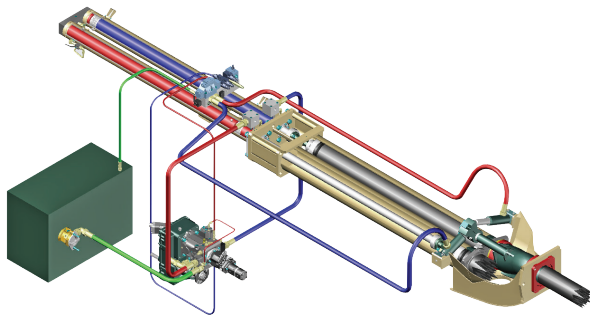
Telescopic (Rear)



**EVERDIGM**

# FFH SYSTEM (Free Flow Hydraulic)

This type of FFH Hydraulic Pressurized Systems combined with **Rexroth**<sup>®</sup> pumps and **Hawe**<sup>®</sup> boom control block is widely recognized to all over the world due to efficiency and stability. Currently Everdigm Pumps are applying these systems for longtime and widely known and also proven the products to everyone. Based on these facts FFH systems are used all over the world and mostly welcomed. Efficient pumps, less boom bouncing and less noise for while it operates. As above all, these reasons they are providing comfortable working area.



## FEATURES

### PUMPING UNIT

- \_\_\_\_\_ Closed-loop Free Flow Hydraulic System
- \_\_\_\_\_ Inductive Proximity Switch and Indicator
- \_\_\_\_\_ Single Lip Concrete Piston
- \_\_\_\_\_ Hard-Chromed Concrete Cylinder

### BOOM & STRUCTURE

- \_\_\_\_\_ 4 Stage Z-Folding Boom
- \_\_\_\_\_ Diagonal Extension Front Outrigger (One Stage)
- \_\_\_\_\_ Telescopic Rear Outrigger (One Stage)
- \_\_\_\_\_ Outrigger Pilot Check Valves
- \_\_\_\_\_ Rack Gear Cylinder Type Boom Slewing
- \_\_\_\_\_ High Pressure End Hose (3m)
- \_\_\_\_\_ Boom & Deck Pipe Diameter 125mm
- \_\_\_\_\_ Greasing Port on Boom Link and Pedestal
- \_\_\_\_\_ Bubble Gauge on Both Side
- \_\_\_\_\_ Hinged Type Side Plates on Platform
- \_\_\_\_\_ Water Pump, Water Tank, Cleaning Hose and Spray Nozzle
- \_\_\_\_\_ Working Light on Pedestal and Platform

### HOPPER

- \_\_\_\_\_ Easy Clean Type Hopper
- \_\_\_\_\_ Hi-Manganese Agitating Paddle
- \_\_\_\_\_ 600 Liter Volume Hopper
- \_\_\_\_\_ Hopper Outlet Diameter 180mm
- \_\_\_\_\_ S2018 Type S-tube (Dia.200-180mm)
- \_\_\_\_\_ Flap Elbow (Dia.180-150mm) with Cleaning Port
- \_\_\_\_\_ Reducing Pipe (150-125mm)
- \_\_\_\_\_ Tungsten Carbide Wear Ring and Plate
- \_\_\_\_\_ Hydraulic Agitator Motors on Both Side Hopper
- \_\_\_\_\_ Auto Lubrication
- \_\_\_\_\_ Working Light on Hopper

- \_\_\_\_\_ Direct connecting main pump and hydraulic cylinders improve pumping efficiency
- \_\_\_\_\_ Less peak pressure & less boom bouncing by peak pressure control
- \_\_\_\_\_ No need of big oil tank
- \_\_\_\_\_ Cut down maintenance cost
- \_\_\_\_\_ Applying suction filter
- \_\_\_\_\_ Prevent contamination in main pump
- \_\_\_\_\_ Centralized pumping controller
- \_\_\_\_\_ Easy access and maintenance

### CONTROL KIT

- \_\_\_\_\_ Wire Remote Control (40m Cord)
- \_\_\_\_\_ Wireless Remote Control (Proportional)
- \_\_\_\_\_ Remote ON/OFF Pumping
- \_\_\_\_\_ Remote ON/FF Engine
- \_\_\_\_\_ Infinite Variable RPM Control
- \_\_\_\_\_ Boom Control Block
- \_\_\_\_\_ Outrigger Control Block on Both Side
- \_\_\_\_\_ Emergency Stop Switch
- \_\_\_\_\_ Electric Main Control Panel and Local Controller
- \_\_\_\_\_ Pneumatic Solenoid Valve Type PTO Control
- \_\_\_\_\_ Stroke Changeover Switch

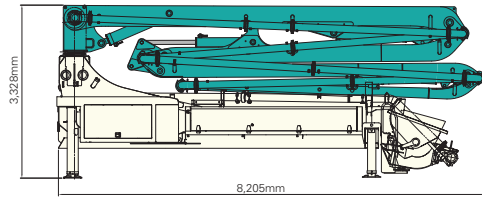
### OPTIONAL

- |           |                                |
|-----------|--------------------------------|
| Boom      | Twin Wall Pipe                 |
|           | Auto Lubrication               |
|           | Working Light                  |
| Outrigger | Outrigger Pads and Compartment |
|           | Cover                          |
| Hopper    | Safety Device                  |
|           | Central Manual Lubrication     |
|           | Vibrator                       |
| Platform  | Aluminum Platform              |
|           | Handrail on Rear Step          |
|           | Spare Tire Storage Bracket     |
| Paint     | Customized Color               |

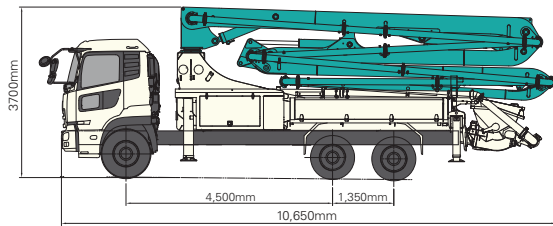
Note) For more optional item not mentioned above please consult the manufacture.

# SPECIFICATIONS

## DIMENSIONS



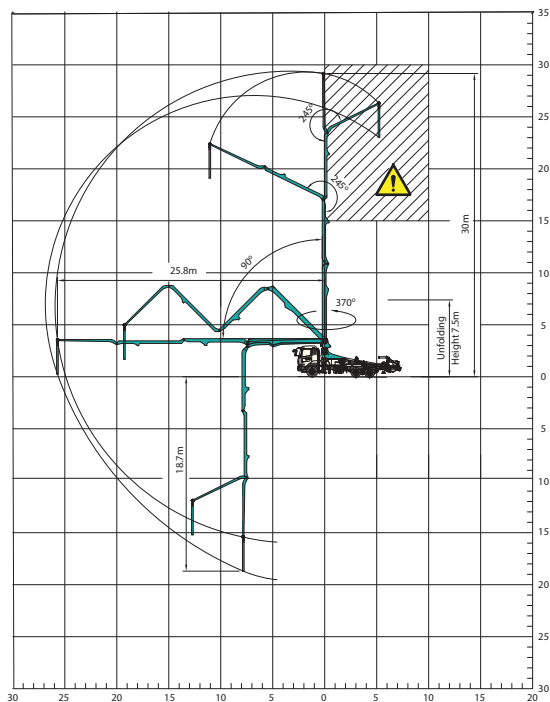
Pump Unit Weight	13,200kg
Water Tank Capacity	400L



Front Axle Loading Weight	7,000kg
Rear Axles Loading Weight	14,800kg

\* Weight and dimension figures here are subject to change on various chassis option and additional axle application etc.

## WORKING RANGE



⚠ Don't use in caution area

UNIT : m

## PUMP

Pump Cell	1609	1611
Control System	Closed Free Flow Hydraulic	
Main Pump	A4VG125	A4VG180
Concrete Cylinder (mm)	Dia.200	230
	Stroke 1,600	1,600
Drive Cylinder (mm)	Dia.110	140
	Stroke 1,600	1,600
Theoretical Concrete Output (m <sup>3</sup> /h)	90	110
Theoretical Concrete Pressure (bar)	70	85
Stroke No. (per minute)	25	27
Transfer Tube Type	S-Tube, S2018 (Dia. 200-180mm)	
Hopper Volume (liter)	600	600

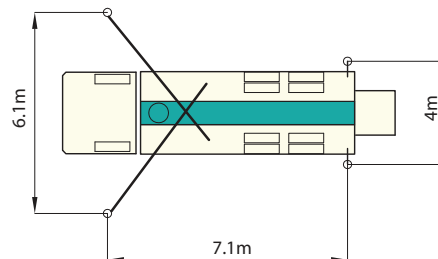
## BOOM

Folding Type	4 Stage Z-folding
Slewing Angle	370deg.
Max. Vertical Reach	30m
Max. Horizontal Reach	25.8m
Max. Depth Reach	18.7m (incl. End Hose 3m)
Unfolding Height	7.5m
End Hose Length	3m
Delivery Pipe Dia.	125mm

## OUTRIGGER

Front Outrigger	One Stage Diagonal Extension
	Full Spread Width 6.1m
Rear Outrigger Type	One Stage Telescopic
	Full Spread Width 4m

## OUTRIGGER SPREAD



Note) Technical amendments are reserved. The specifications are subject to change with or without prior notice.

# EVERDIGM

EVERDIGM is large sized company with \$250M turnover providing customers across the world with its quality products. EVERDIGM has been working and growing based on the platform of advanced quality, professionalism and real satisfaction. Standing behind the customers taking responsibility at all stage its product life cycle is EVERDIGM's commitment.



## Build the Future

The spirit, "build the future", enables EVERDIGM to make a remarkable growth over 80 countries now. EVERDIGM offers the best value concrete pump which is key to build the brighter future for dealers and customers.

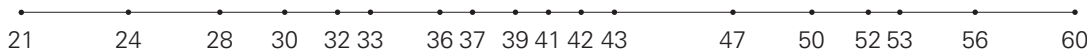
## Concrete Pump

- Free Flow Hydraulic System
- Boom Pump Ranging from 21M to 60M
- Placing Boom of Various Design
- High Pressure Trailer and Line Pump



### Truck Mounted Boom Pump Line-up (Max. Vertical Reach)

Unit : m



### Trailer Pump Line-up (Max. Concrete Pressure)

Unit : bar



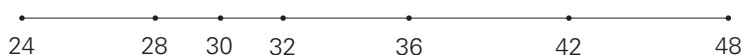
### Line Pump Line-up (Max. Concrete Pressure)

Unit : bar



### Placing Boom Line-up (Max. Horizontal Reach)

Unit : m



Distributed by

**Head Office & Factory**  
332-3, Janggwan-Ri, Jincheon-Eub, Chungcheongbuk-Do, Korea  
Tel\_+82-43-530-3300 Fax\_+82-43-530-3429

**Sales & Marketing Office**  
Room #1203, Woolim Lion's Valley 2, 680, Gasan-Dong, Geumcheon-Gu, Seoul, Korea  
Tel\_+82-2-801-0800 Fax\_+82-2-801-0899

@EVERDIGM Corp. Printed in Korea

