



Watching Video

Concrete Pumps / Boom Pumps

ECP36RX

Boom Type

4 section R folding

Vertical Reach

36m

Horizontal Reach

32m

Depth Reach

24.1m

Delivery Pipe Diameter

125mm

Slewing Range

370°

Outrigger

Diagonal extension (Front)

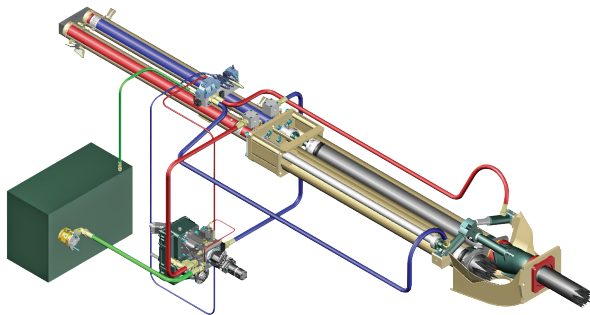
Swing-type (Rear)



EVERDIGM

FFH SYSTEM (Free Flow Hydraulic)

This type of FFH Hydraulic Pressurized Systems combined with **Rexroth**[®] pumps and **Hawe**[®] boom control block is widely recognized to all over the world due to efficiency and stability. Currently Everdigm Pumps are applying these systems for longtime and widely known and also proven the products to everyone. Based on these facts FFH systems are used all over the world and mostly welcomed. Efficient pumps, less boom bouncing and less noise for while it operates. As above all, these reasons they are providing comfortable working area.



FEATURES

PUMPING UNIT

Closed-loop Free Flow Hydraulic System
 Inductive Proximity Switch and Indicator
 Single Lip Concrete Piston
 Hard-Chromed Concrete Cylinder

BOOM & STRUCTURE

4 Stage R-Folding Boom
 Diagonal Extension Front Outrigger (One Stage)
 Swing Rear Outrigger (One Stage)
 Outrigger Pilot Check Valves
 Rack Gear Cylinder Type Boom Slewing
 High Pressure End Hose (3m)
 Boom & Deck Pipe Diameter 125mm
 Greasing Port on Boom Link and Pedestal
 Bubble Gauge on Both Side
 Water Pump, Water Tank, Cleaning Hose and Spray Nozzle
 Working Light on Pedestal and Platform

HOPPER

Easy Clean Type Hopper
 Hi-Manganese Agitating Paddle
 600 Liter Volume Hopper
 Hopper Outlet Diameter 180mm
 S2018 Type S-tube (Dia.200-180mm)
 Flap Elbow (Dia.180-150mm) with Cleaning Port
 Reducing Pipe (150-125mm)
 Tungsten Carbide Wear Ring and Plate
 Hydraulic Agitator Motors on Both Side Hopper
 Auto Lubrication
 Working Light on Hopper

Direct connecting main pump and hydraulic cylinders
 improve pumping efficiency

Less peak pressure & less boom bouncing by peak
 pressure control

No need of big oil tank

Cut down maintenance cost

Applying suction filter

Prevent contamination in main pump

Centralized pumping controller

Easy access and maintenance

CONTROL KIT

Wire Remote Control (40m Cord)
 Wireless Remote Control (Proportional)
 Remote ON/OFF Pumping
 Remote ON/FF Engine
 Infinite Variable RPM Control
 Boom Control Block
 Outrigger Control Block on Both Side
 Emergency Stop Switch
 Electric Main Control Panel and Local Controller
 Pneumatic Solenoid Valve Type PTO Control
 Stroke Changeover Switch

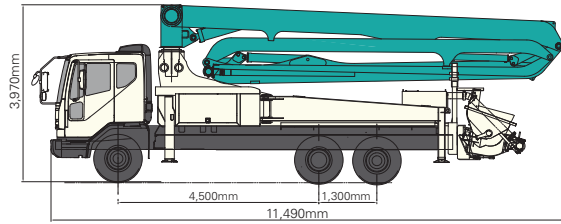
OPTIONAL

| | |
|-----------|---|
| Boom | Twin Wall Pipe |
| | Auto Lubrication |
| | Working Light |
| Outrigger | Outrigger Pads and Compartment |
| | Pipe Storage Bracket on One Side Rear Outrigger |
| Hopper | Cover |
| | Safety Device |
| | Central Manual Lubrication |
| Platform | Vibrator |
| | Aluminum Platform |
| | Handrail on Rear Step |
| | Spare Tire Storage Bracket |
| Paint | Customized Color |

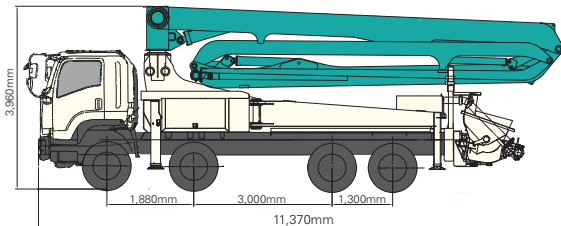
Note) For more optional item not mentioned above please consult the manufacture.

SPECIFICATIONS

DIMENSIONS



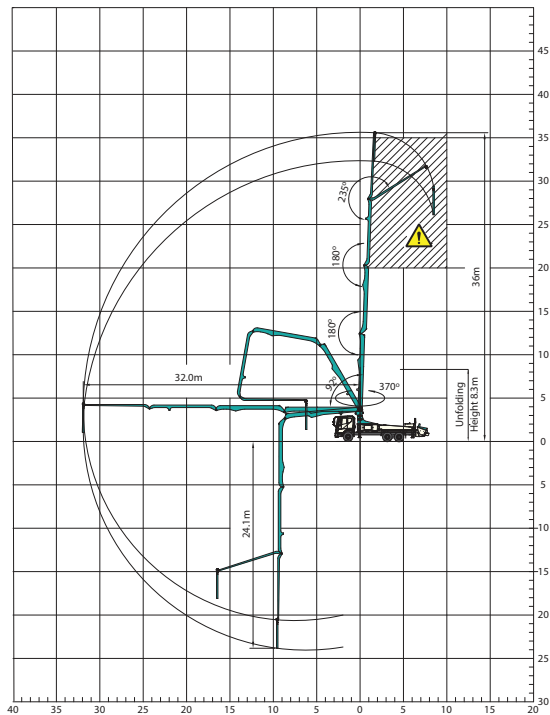
| | |
|---------------------------|----------|
| Front Axle Loading Weight | 6,400kg |
| Rear Axles Loading Weight | 18,600kg |



| | |
|----------------------------|----------|
| Front Axles Loading Weight | 10,400kg |
| Rear Axles Loading Weight | 16,000kg |

* Weight and dimension figures here are subject to change on various chassis option and additional axle application etc.

WORKING RANGE



Don't use in caution area

UNIT : m

PUMP

| | | | |
|---|--------------------------------|---------|-----------|
| Pump Cell | 2113 | 2114 | 2116 |
| Control System | Closed Free Flow Hydraulic | | |
| Main Pump | A4VG125 | A4VG180 | A4VG125x2 |
| Concrete Cylinder (mm) | Dia. 230 | 230 | 230 |
| | Stroke 2,100 | 2,100 | 2,100 |
| Drive Cylinder (mm) | Dia. 120 | 130 | 140 |
| | Stroke 2,100 | 2,100 | 2,100 |
| Theoretical Concrete Output (m ³ /h) | 130 | 140 | 160 |
| Theoretical Concrete Pressure (bar) | 54 | 70 | 85 |
| Stroke No.(perminute) | 24 | 26 | 30 |
| Transfer Tube Type | S-Tube, S2018 (Dia. 200-180mm) | | |
| Volume of Hopper (liter) | 600 | 600 | 600 |

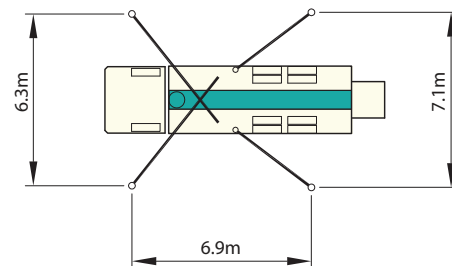
BOOM

| | |
|-----------------------|---------------------------|
| Folding Type | 4 Stage R-folding |
| Slewing Angle | 370deg. |
| Max. Vertical Reach | 36m |
| Max. Horizontal Reach | 32m |
| Max. Depth Reach | 24.1m (incl. End Hose 3m) |
| Unfolding Height | 8.3m |
| End Hose Length | 3m |
| Delivery Pipe Dia. | 125mm |

OUTRIGGER

| | |
|---------------------|--|
| Front Outrigger | One Stage Diagonal Extension Full Spread Width 6.3m |
| Rear Outrigger Type | One Stage Swing-out Full Spread Width 7.1m |

OUTRIGGER SPREAD



Note) Technical amendments are reserved. The specifications are subject to change with or without prior notice.

EVERDIGM

EVERDIGM is large sized company with \$250M turnover providing customers across the world with its quality products. EVERDIGM has been working and growing based on the platform of advanced quality, professionalism and real satisfaction. Standing behind the customers taking responsibility at all stage its product life cycle is EVERDIGM's commitment.



Build the Future

The spirit, "build the future", enables EVERDIGM to make a remarkable growth over 80 countries now. EVERDIGM offers the best value concrete pump which is key to build the brighter future for dealers and customers.

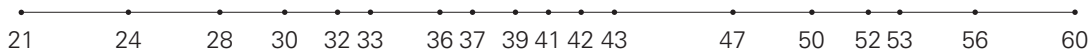
Concrete Pump

- Free Flow Hydraulic System
- Boom Pump Ranging from 21M to 60M
- Placing Boom of Various Design
- High Pressure Trailer and Line Pump



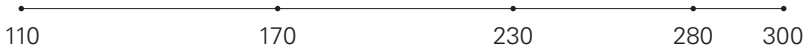
Truck Mounted Boom Pump Line-up (Max. Vertical Reach)

Unit : m



Trailer Pump Line-up (Max. Concrete Pressure)

Unit : bar



Line Pump Line-up (Max. Concrete Pressure)

Unit : bar



Placing Boom Line-up (Max. Horizontal Reach)

Unit : m



Distributed by

Head Office & Factory
 332-3, Janggwan-Ri, Jincheon-Eub, Chungcheongbuk-Do, Korea
 Tel_+82-43-530-3300 Fax_+82-43-530-3429

Sales & Marketing Office
 Room #1203, Woolim Lion's Valley 2, 680, Gasan-Dong, Geumcheon-Gu, Seoul, Korea
 Tel_+82-2-801-0800 Fax_+82-2-801-0899

@EVERDIGM Corp. Printed in Korea

